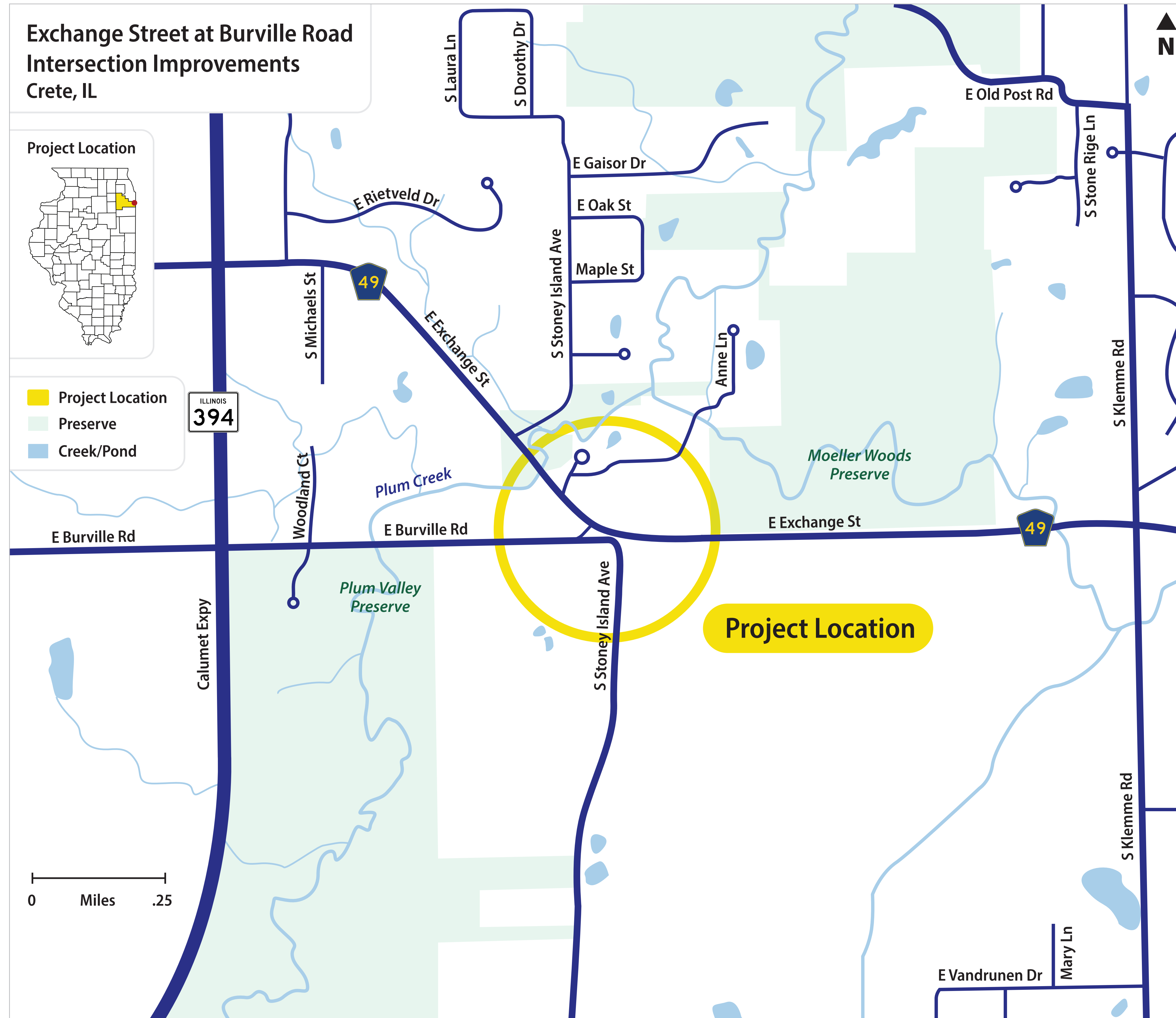


# Welcome



**Crete Township**  
**Road District**

**Exchange Street at  
Burville Road  
Intersection Improvements**



## Public Information Meeting Process:

- Sign In
- View the Exhibits and Video Presentation
- Ask Questions
- Provide Comments

## Meeting Purpose:

- Inform the public of the project goals
- Present the data and analysis
- Show the alternative designs
- Gather public feedback

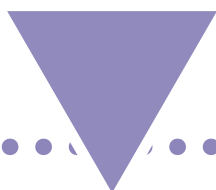
# Project Schedule



Crete Township  
Road District

Exchange Street at  
Burville Road  
Intersection Improvements

We are here



Phase I

Mid-2022 to Mid-2024  
Preliminary Engineering  
& Environmental Studies

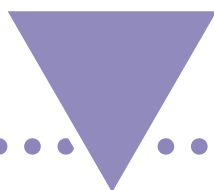
Phase II

Mid-2024 to Late-2025  
Plan Preparation &  
Land Acquisition

Phase III

Early-2026  
to Late-2027  
Construction

We are here



1



Data  
Collection

2



Identify  
Issues  
& Concerns

3



Develop  
& Evaluate  
Alternatives

4



Present  
Alternatives &  
Public Involvement

5



Identify & Refine  
the Preferred  
Alternative

6



Complete  
Environmental &  
Engineering Report

7



Public  
Involvement



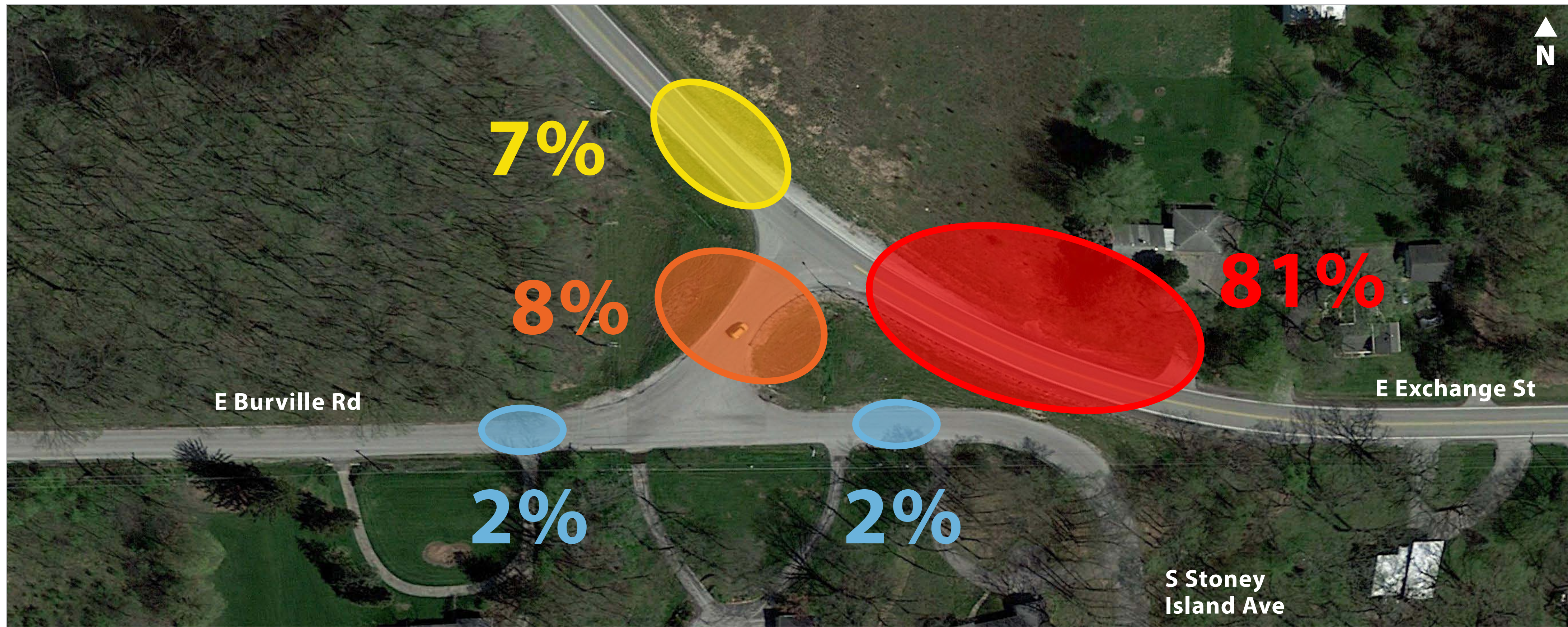
# Traffic Volumes & Crash Data



Crete Township  
Road District

Exchange Street at  
Burville Road  
Intersection Improvements

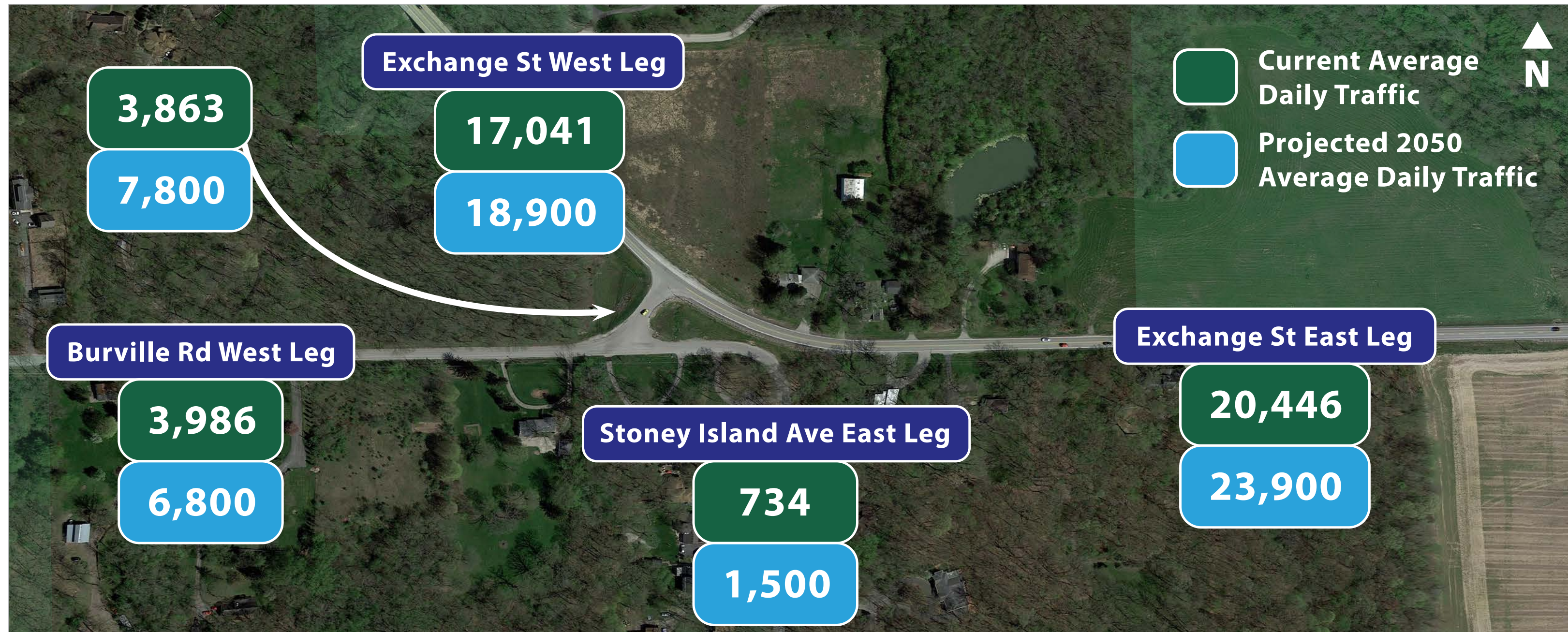
## Where are the Crashes Occuring?



Crash Severity	Total Crashes
K-Fatal	1
A-Incapacity Injury	2
B-Non-Incapacity Injury	9
C-Reported Injury-Not Evident	3
PDO-Property Damage Only	48
Total	63

\*Crash Analysis Period from 2017-2022

## Average Daily Traffic Volumes



## Crash Types and Severity

Within the study limits the following crashes occurred:

- 63 crashes between 2017 and 2022
- Rear-end collisions account for 65% of crashes
- 1 fatality and 14 injury crashes during 2017 to 2022



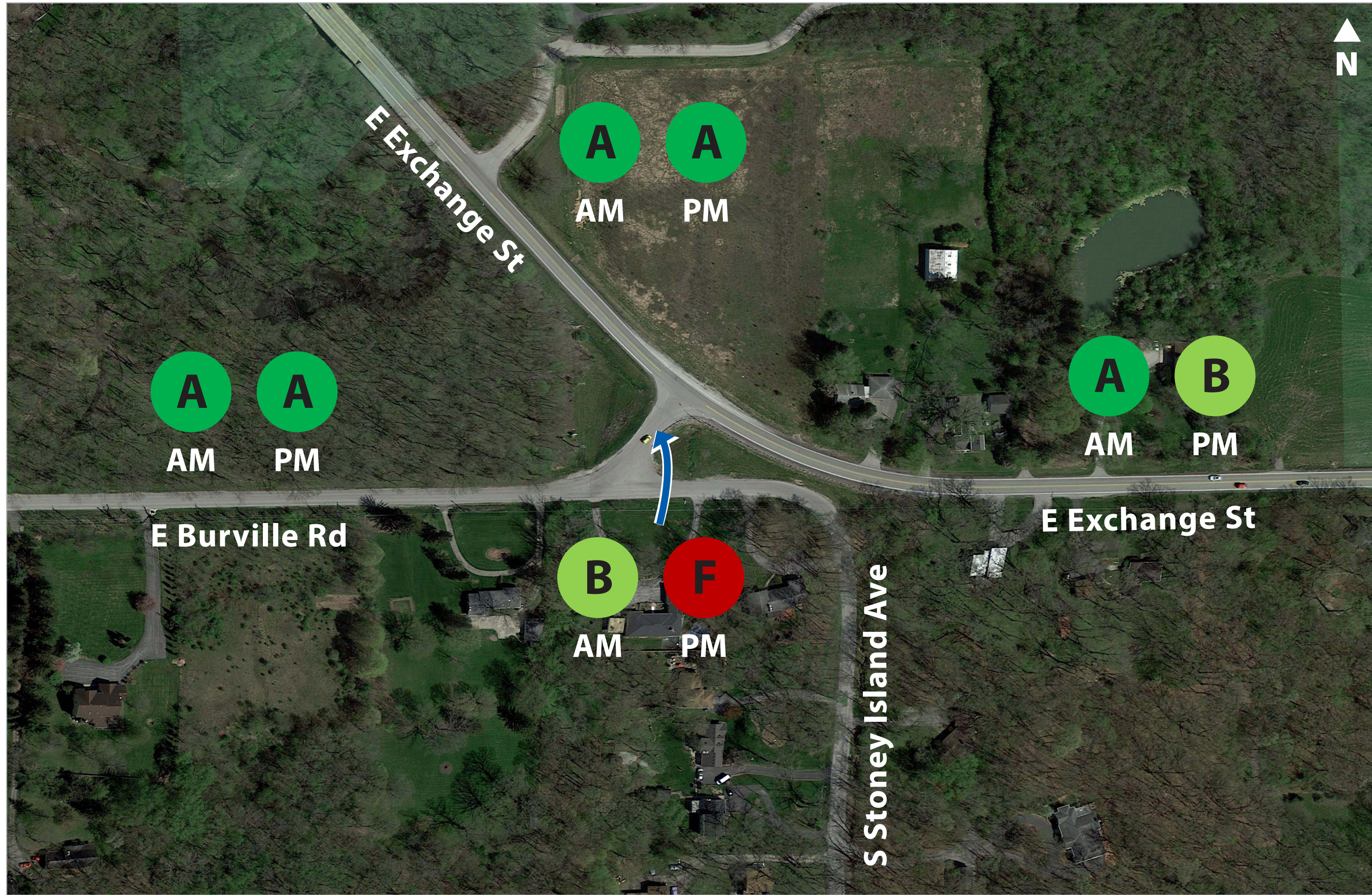
# Traffic Data



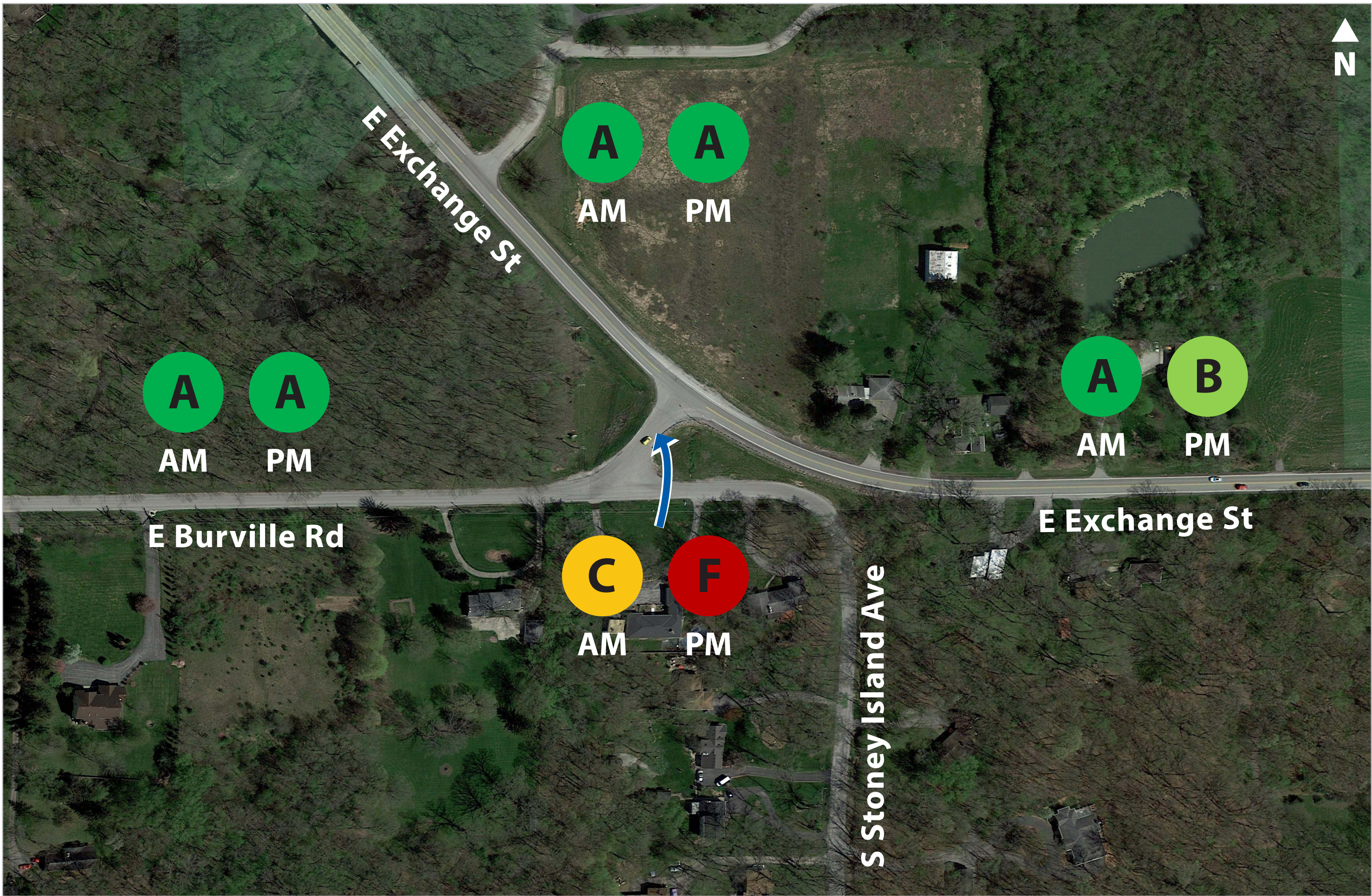
Crete Township  
Road District

Exchange Street at  
Burville Road  
Intersection Improvements

## Existing Condition



## No-Build 2050 Condition



A

B

C

D

E

F

LOS A

Uninterrupted  
vehicle operation

LOS B

Other vehicles  
more noticeable

LOS C

Vehicle operation  
affected by other vehicles

LOS D

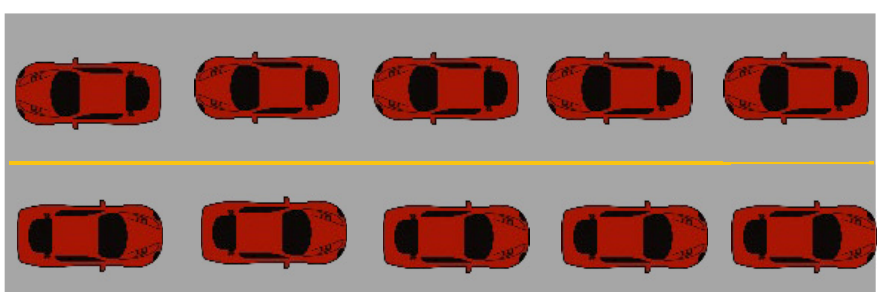
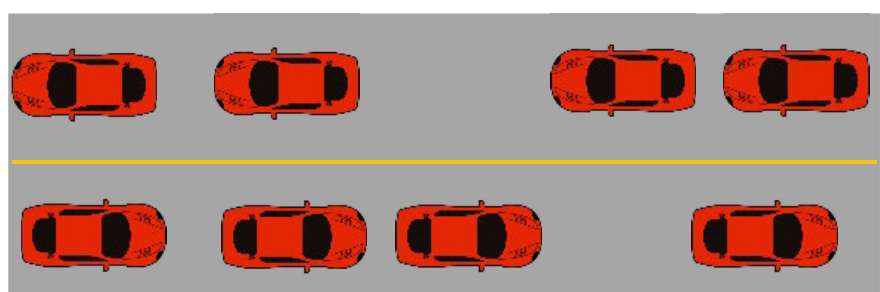
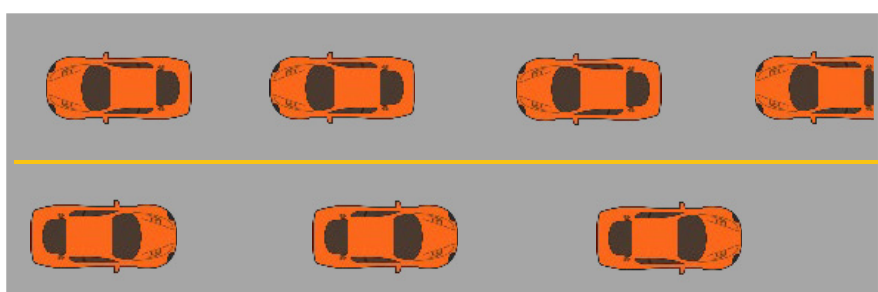
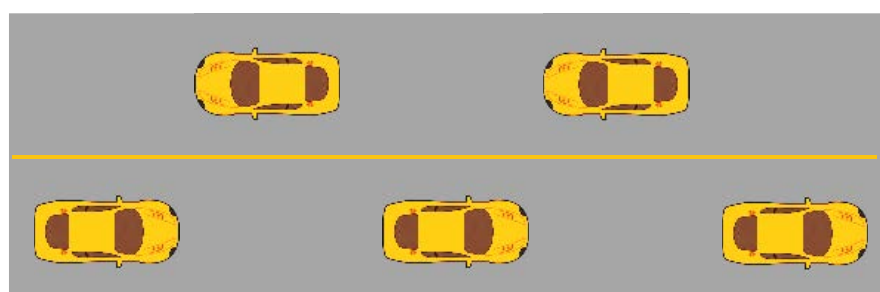
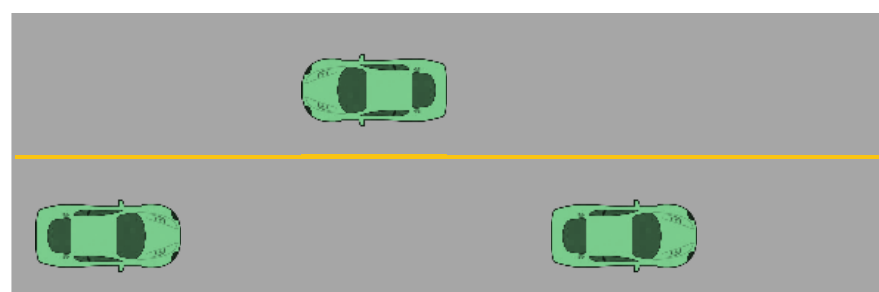
Vehicle operation more  
affected by other vehicles

LOS E

Operating  
conditions are poor

LOS F

Amount of traffic  
exceeds capacity





# Alternatives Analysis



*Crete Township  
Road District*

Exchange Street at  
Burville Road  
Intersection Improvements

	Four-Leg Roundabout	Dog-Bone Roundabout	Signalized Intersection	2050 No-Build
TRAFFIC	Intersection LOS B	Intersection LOS B	Intersection LOS B Exchange Street (NW Leg) Approach LOS C in PM	Burville Road (S Leg) Approach LOS F Other Legs Approach LOS B or Better
RIGHT-OF-WAY	Higher Land Acquisition	Least Land Acquisition	Entire Parcel Purchase of 2056 East Exchange Street	N/A
COST	Moderate Cost to WCDOT	Lowest Cost to WCDOT	*Not HSIP Eligible	N/A
ACCESS	Access Impacts to 3 Properties	Access Impacts to 4 Properties	No Access Impacts	N/A
DRAINAGE	High Comp Storage Volume	Moderate Comp Storage Volume	Lowest Comp Storage Volume	N/A

DESIRABLE

SATISFACTORY

UNDESIRABLE

\*HSIP: Highway Safety Improvement Program  
(Federal funds for safety improvements)



# Four-Leg Roundabout

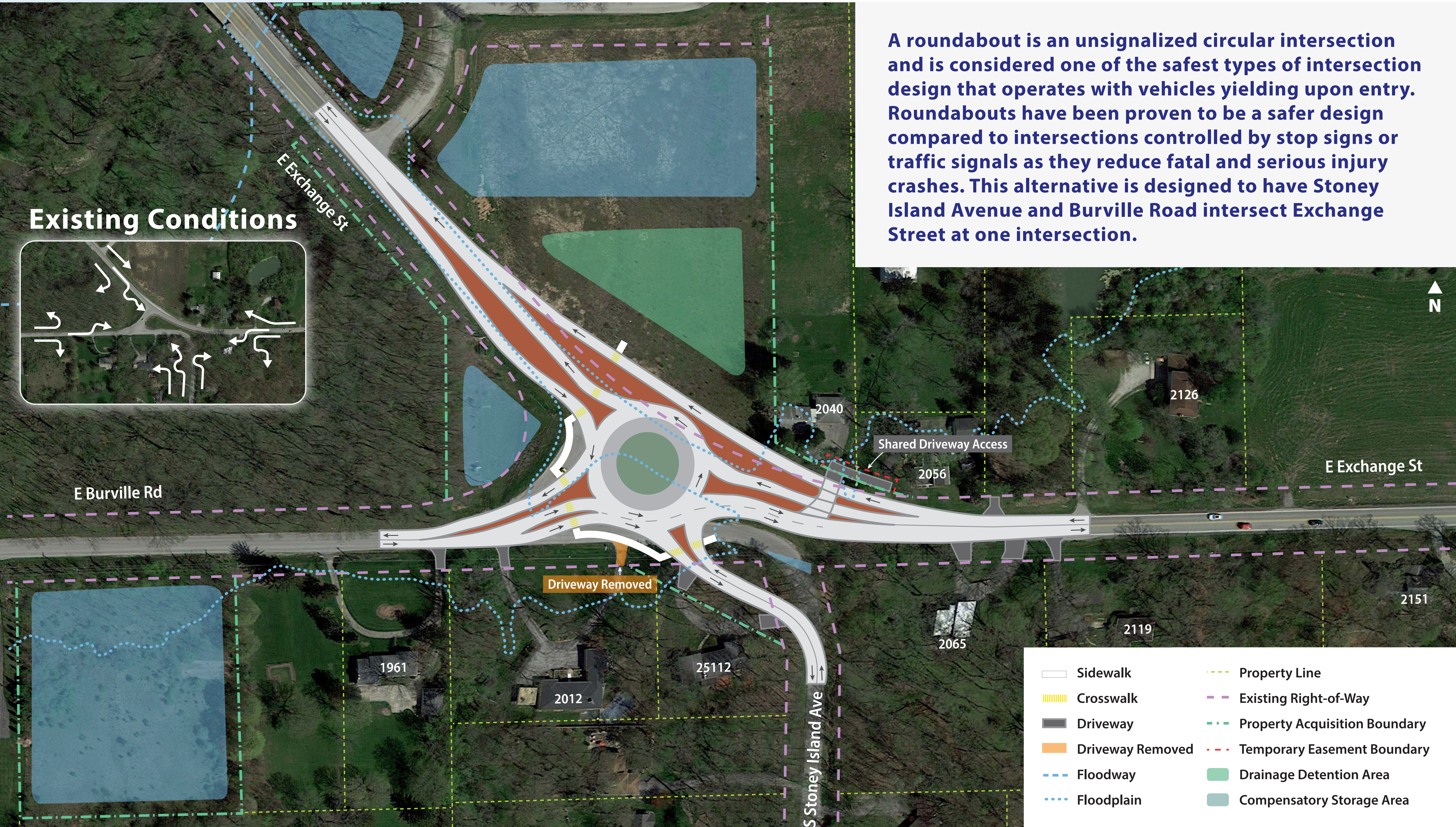
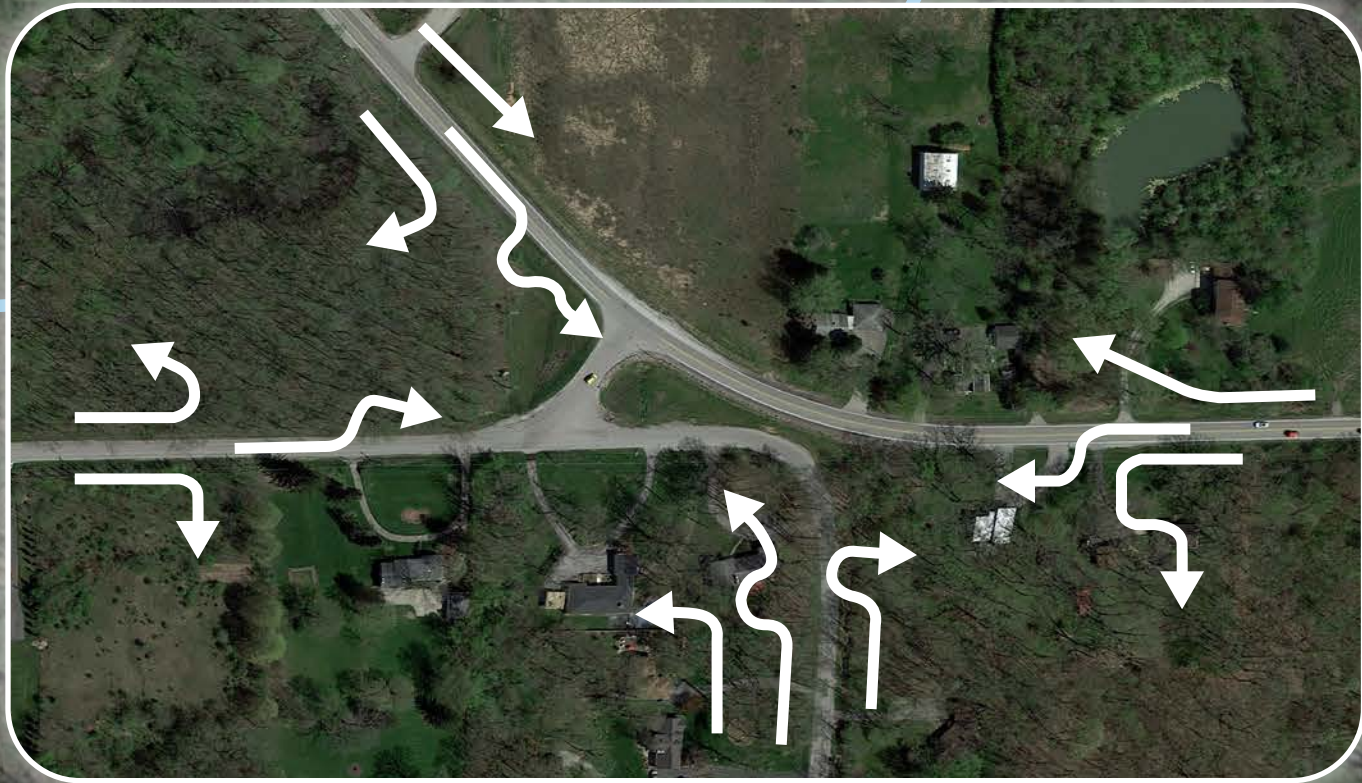


Crete Township  
Road District

Exchange Street at  
Burville Road  
Intersection Improvements

A roundabout is an unsignalized circular intersection and is considered one of the safest types of intersection design that operates with vehicles yielding upon entry. Roundabouts have been proven to be a safer design compared to intersections controlled by stop signs or traffic signals as they reduce fatal and serious injury crashes. This alternative is designed to have Stoney Island Avenue and Burville Road intersect Exchange Street at one intersection.

## Existing Conditions



- |                  |                               |
|------------------|-------------------------------|
| Sidewalk         | Property Line                 |
| Crosswalk        | Existing Right-of-Way         |
| Driveway         | Property Acquisition Boundary |
| Driveway Removed | Temporary Easement Boundary   |
| Floodway         | Drainage Detention Area       |
| Floodplain       | Compensatory Storage Area     |



# Dog-Bone Roundabout

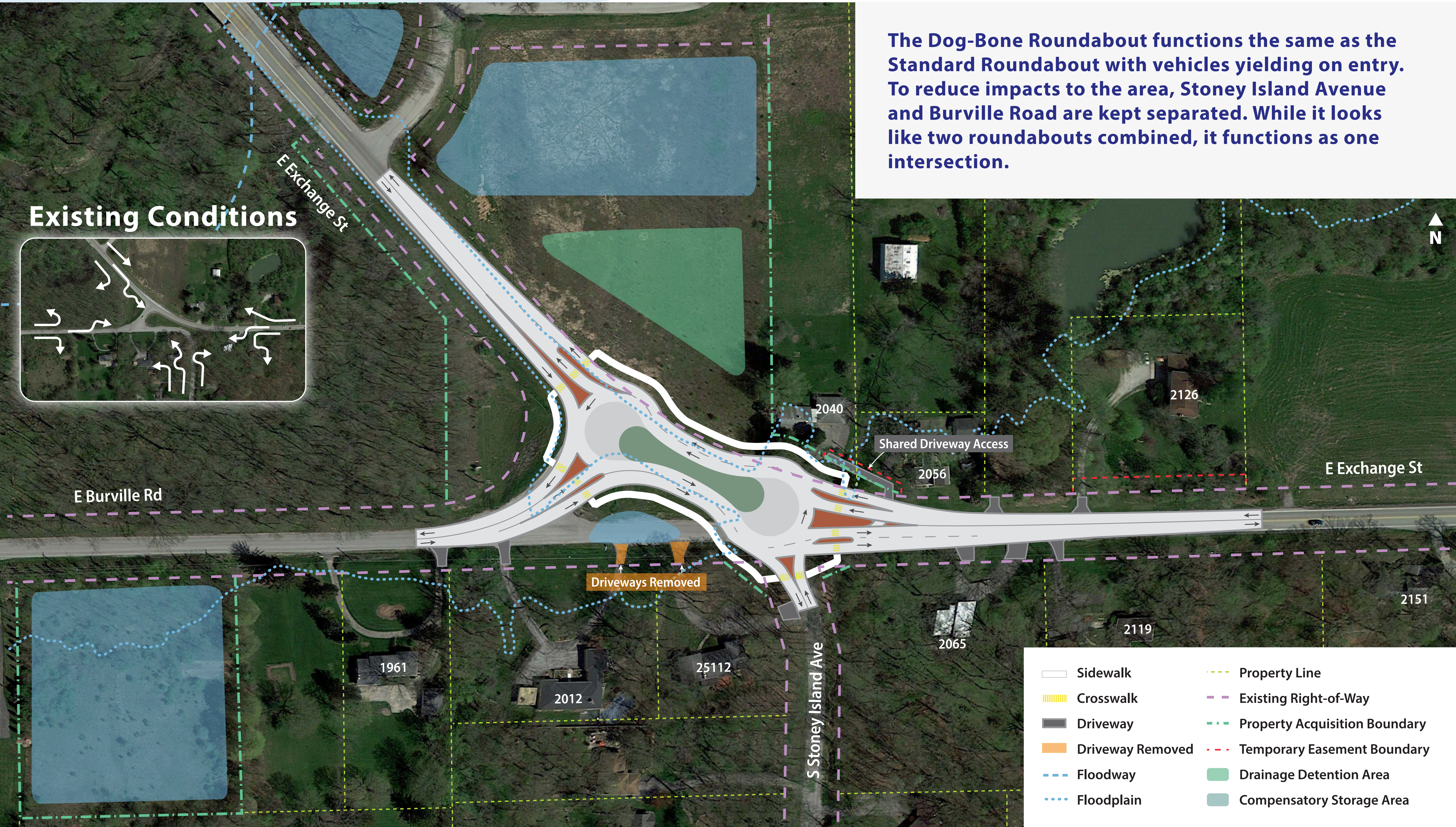


Crete Township  
Road District

Exchange Street at  
Burville Road  
Intersection Improvements

The Dog-Bone Roundabout functions the same as the Standard Roundabout with vehicles yielding on entry. To reduce impacts to the area, Stoney Island Avenue and Burville Road are kept separated. While it looks like two roundabouts combined, it functions as one intersection.

## Existing Conditions





# Signalized Intersection

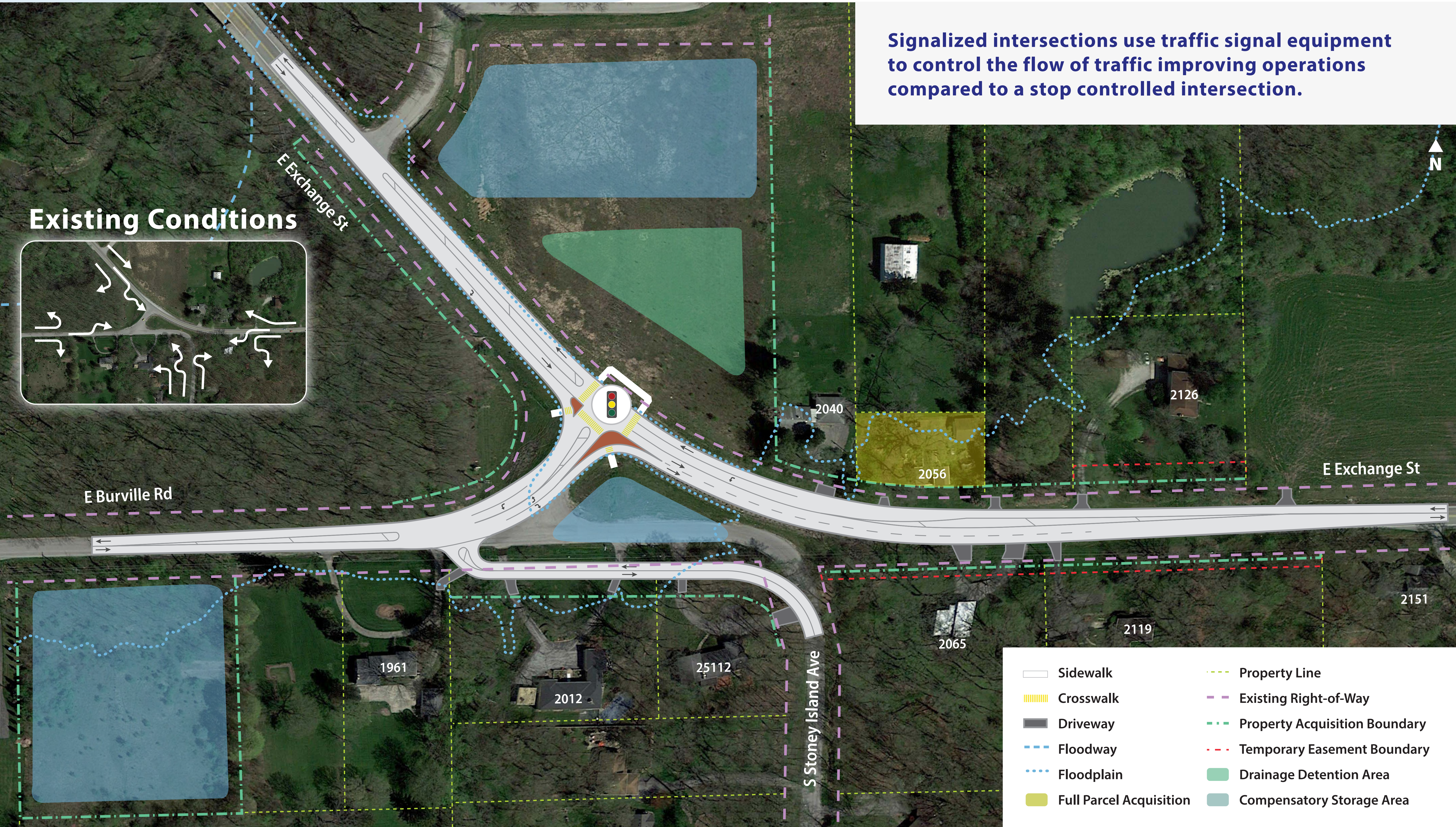
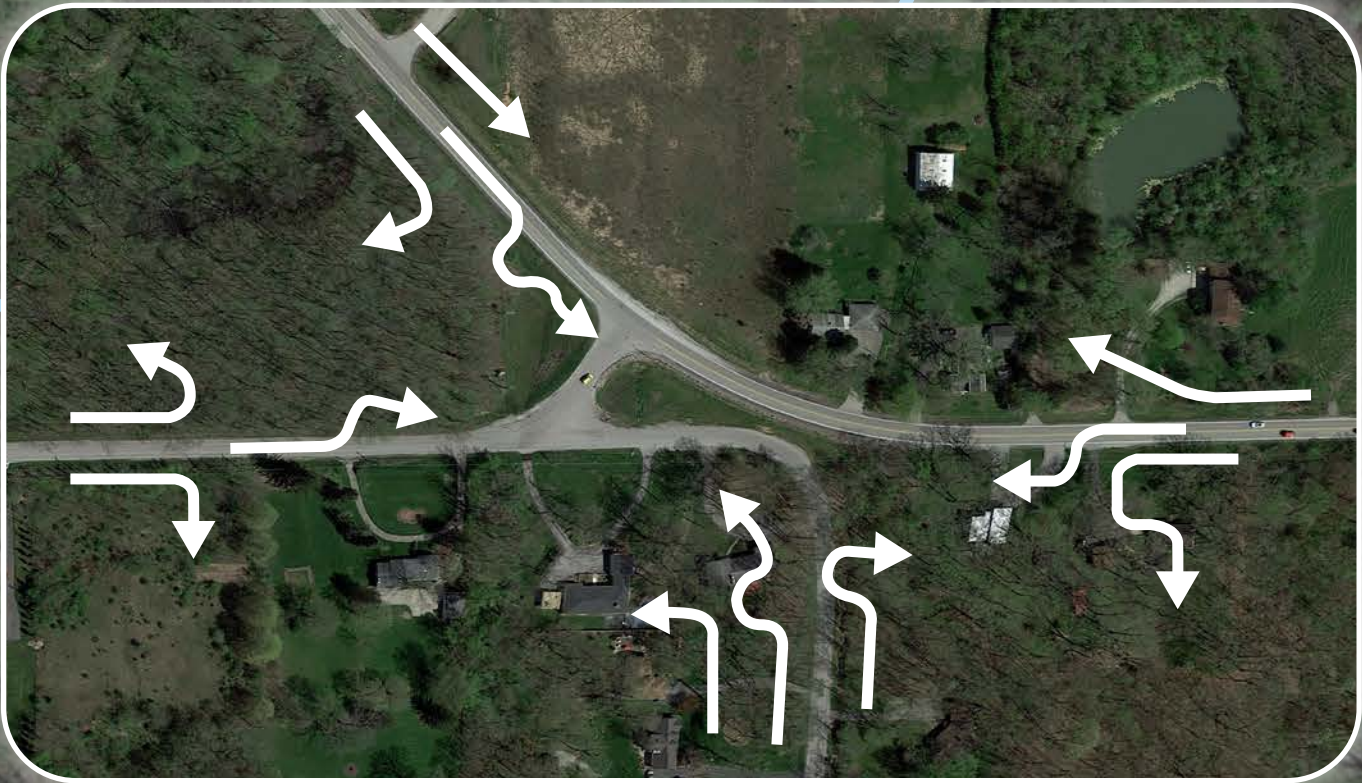


Crete Township  
Road District

Exchange Street at  
Burville Road  
Intersection Improvements

Signalized intersections use traffic signal equipment to control the flow of traffic improving operations compared to a stop controlled intersection.

## Existing Conditions



- |                         |                               |
|-------------------------|-------------------------------|
| Sidewalk                | Property Line                 |
| Crosswalk               | Existing Right-of-Way         |
| Driveway                | Property Acquisition Boundary |
| Floodway                | Temporary Easement Boundary   |
| Floodplain              | Drainage Detention Area       |
| Full Parcel Acquisition | Compensatory Storage Area     |

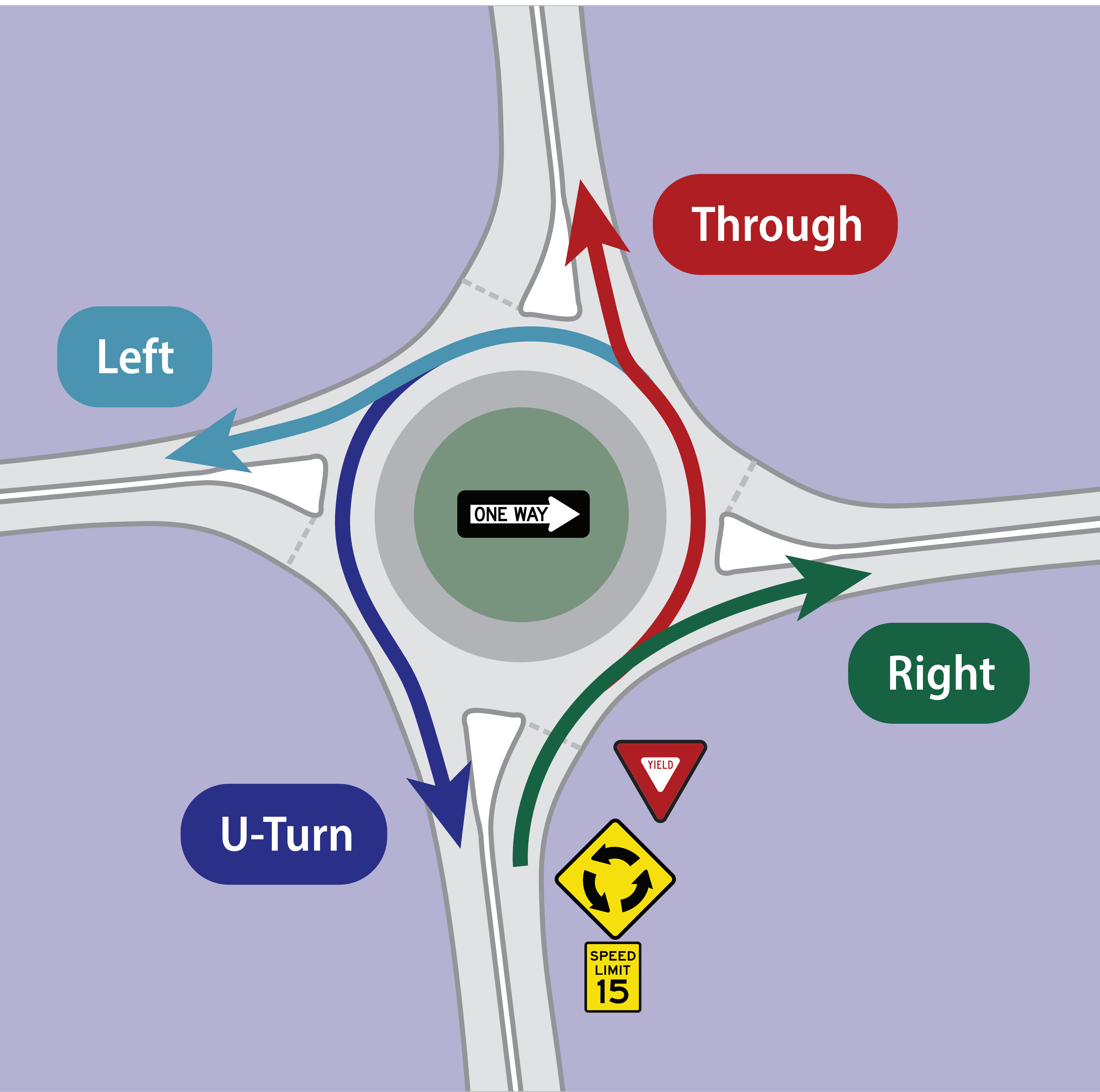


# How to Use a Roundabout



Crete Township  
Road District

Exchange Street at  
Burville Road  
Intersection Improvements



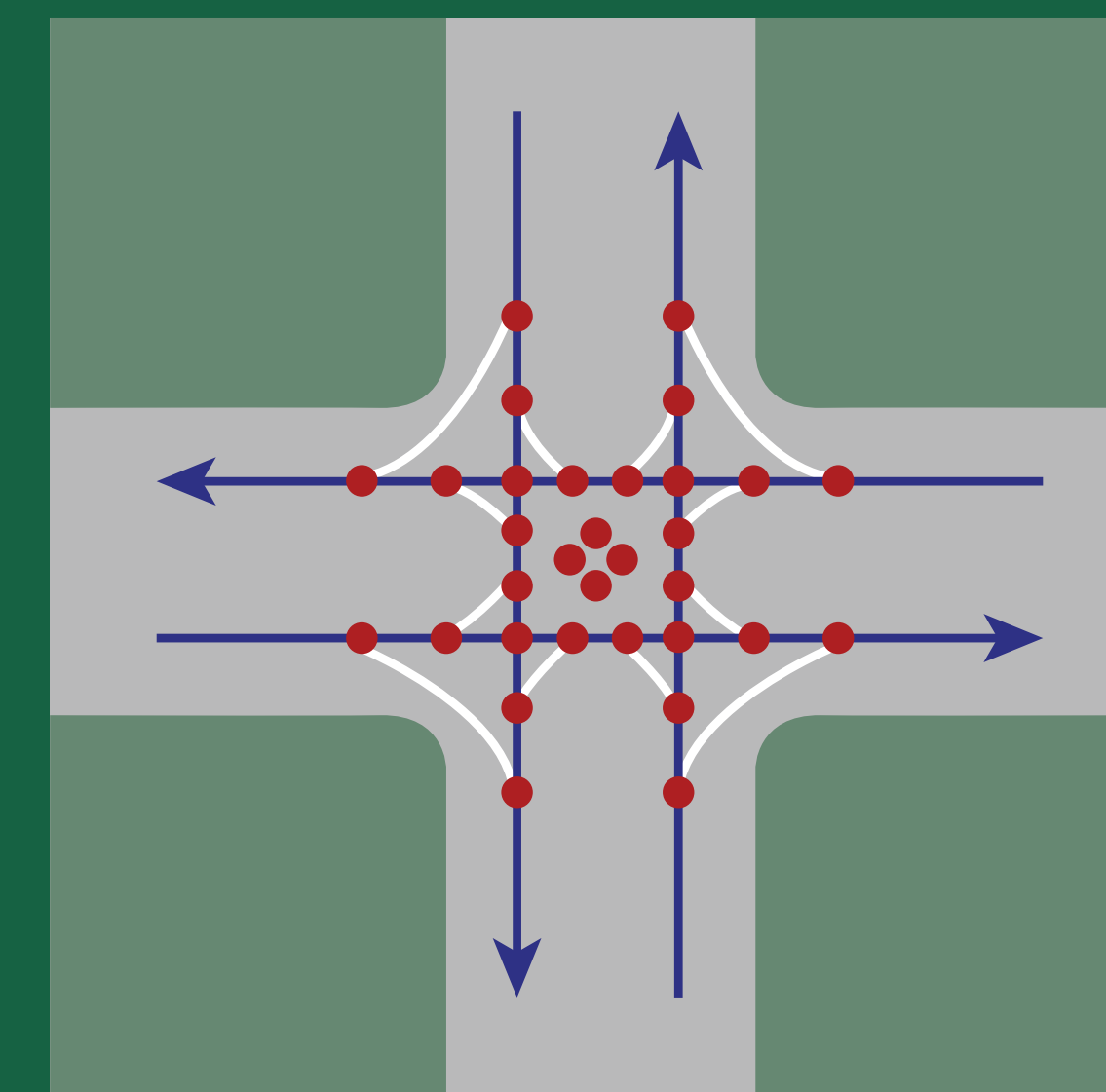
## How to Use a Roundabout:

- Entering traffic slows when approaching the roundabout
- Entering traffic yields to vehicles in the roundabout approaching from the left

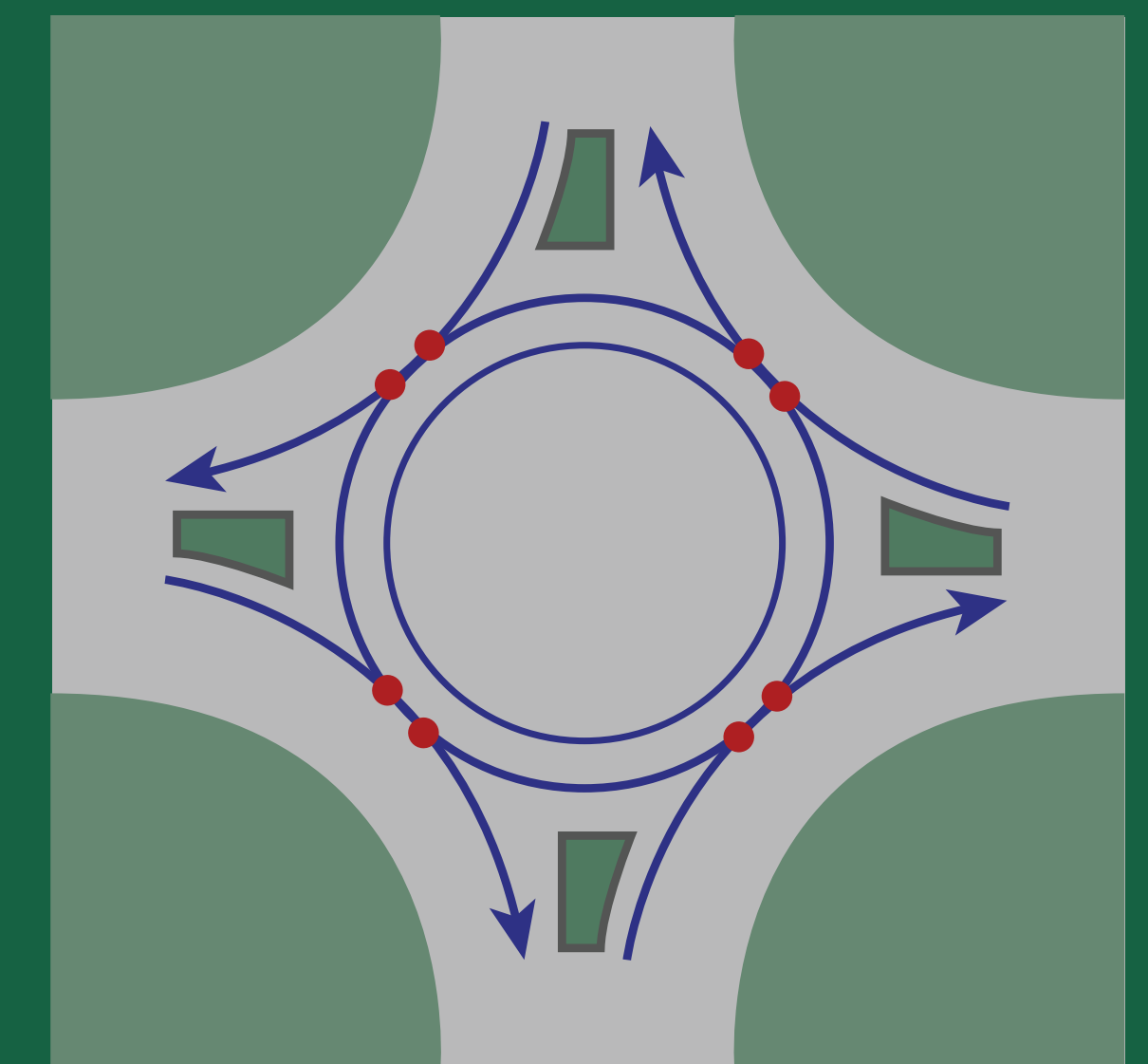
## Key Features:

- Traffic is slowed to 15 mph or less improving safety
- Entering vehicles only need to observe vehicles approaching from the left reducing the complexity of navigating around other vehicles
- No waiting at a red light during low traffic volume times

With roundabouts, head-on and high-speed right angle collisions are virtually eliminated.



Traditional Intersection



Roundabout

● Potential Vehicle Conflict Point



# Share Your Voice!



 **Crete Township**  
**Road District**

**Exchange Street at  
Burville Road  
Intersection Improvements**

**We're committed to creating opportunities for our neighbors, commuters and local businesses to provide meaningful feedback as we study the area.**

**Use the stickers provided to indicate on this board the factors that are most important to you.**

 **Safety**

 **Cost**

 **Reduced Traffic Congestion**

 **Impact to Adjacent Properties**

 **Preservation of Natural Areas**

 **Traffic Noise**

 **Bike and Pedestrian Access**



# Stay Connected



 **Crete Township  
Road District**

**Exchange Street at  
Burville Road  
Intersection Improvements**

## Questions or Comments?

**There are many ways to get in touch and/or provide comments. Submit in-person or you may reach out to Will County with any comments at the contact information below.**



**ckupkowski@willcountyillinois.com**



**(815) 727-8476**



**Attn: Christina Kupkowski, P.E.  
Will County Division of Transportation  
Phase 1 Project Manager  
16841 W. Laraway Road, Joliet, IL 60433**



**[www.BurvilleAtExchangeStudy.com](http://www.BurvilleAtExchangeStudy.com)**