



Crete Township Road District

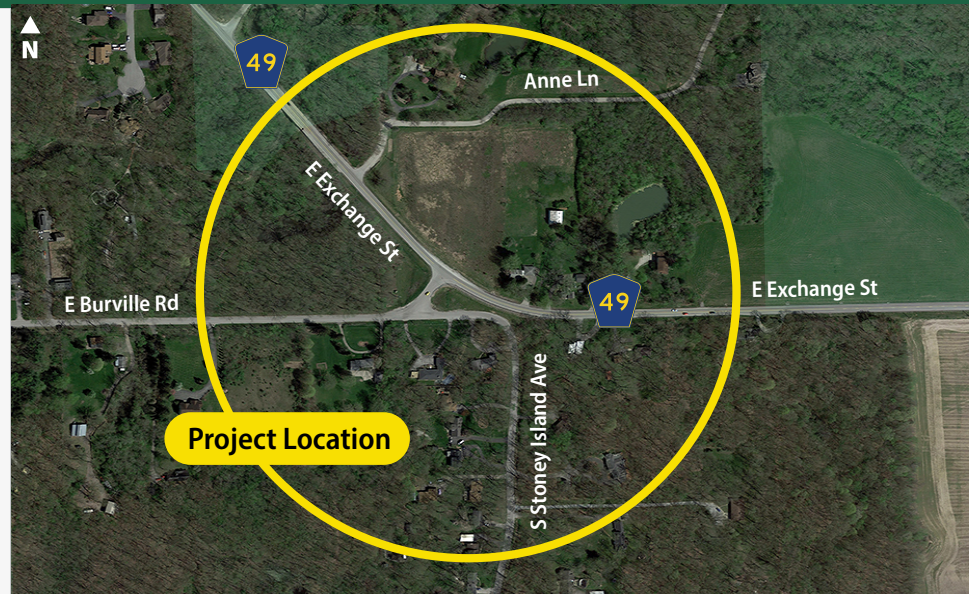
Exchange Street at Burville Road Intersection Improvements

PROJECT PURPOSE AND NEED

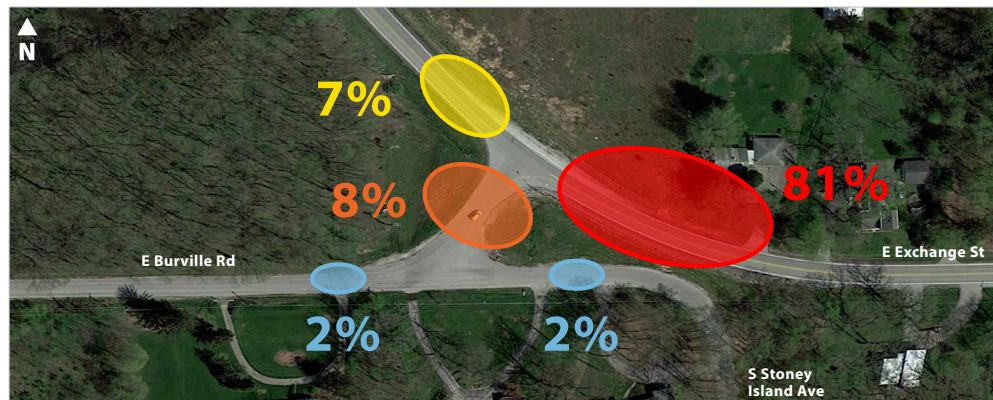
The Will County Division of Transportation and Crete Township Road District are conducting a Phase I Preliminary Engineering and Environmental Study at the intersection of Exchange Street at Burville Road near Crete, Illinois.

The purpose of the study is to address traffic safety and operation issues at the intersection by evaluating a range of potential alternatives including traffic signals and multiple roundabout designs.

The alternatives are being analyzed based on their traffic operations, safety, environmental, right-of-way impacts, and cost. Public comment is being sought regarding the potential alternatives for the study area.



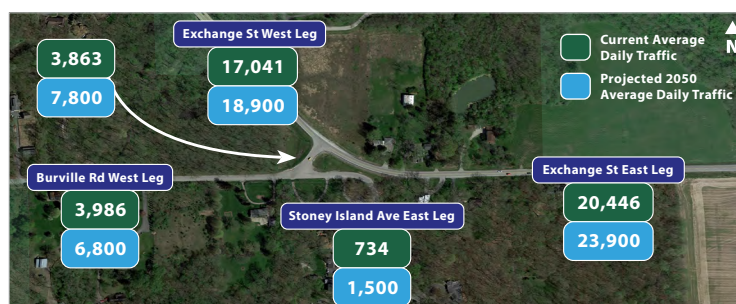
WHERE ARE THE CRASHES OCCURRING?



Crash Severity	Total Crashes
K-Fatal	1
A-Incapacity Injury	2
B-Non-Incapacity Injury	9
C-Reported Injury-Not Evident	3
PDO-Property Damage Only	48
Total	63

*Crash Analysis Period from 2017-2022

AVERAGE DAILY TRAFFIC VOLUMES



CRASH TYPES AND SEVERITY

Within the study limits the following crashes occurred:

- 63 crashes between 2017 and 2022
- Rear-end collisions account for 65% of crashes
- 1 fatality and 14 injury crashes during 2017 to 2022

PUBLIC INFORMATION MEETING



Thursday, April 13, 2023



4:00 PM to 7:00 PM



26730 S. Stoney
Island Avenue
Crete, IL 60417



FOUR-LEG ROUNDABOUT



A roundabout is an unsignalized circular intersection and is considered one of the safest types of intersection design that operates with vehicles yielding upon entry. Roundabouts have been proven to be a safer design compared to intersections controlled by stop signs or traffic signals as they reduce fatal and serious injury crashes. This alternative is designed to have Stoney Island Avenue and Burville Road intersect Exchange Street at one intersection.

DOG-BONE ROUNDABOUT



The Dog-Bone Roundabout functions the same as the Standard Roundabout with vehicles yielding on entry. To reduce impacts to the area, Stoney Island Avenue and Burville Road are kept separated. While it looks like two roundabouts combined, it functions as one intersection.

We are here

PROJECT SCHEDULE



We are here

PHASE I SCHEDULE





Crete Township Road District

Exchange Street at Burville Road Intersection Improvements

SIGNALIZED INTERSECTION



Signalized intersections use traffic signal equipment to control the flow of traffic improving operations compared to a stop controlled intersection.



Public Information Meeting exhibits and an online comment form are also available at www.BurvilleAtExchangeStudy.com

PUBLIC INPUT

Comments can be submitted online, in-person at the meeting, or to:



Attn: Christina Kupkowski, P.E.
Will County Division of Transportation
Phase 1 Project Manager
16841 W. Laraway Road, Joliet, IL 60433



ckupkowski@willcountyillinois.com



(815) 727-8476