



Crete Township Road District

Exchange Street at Burville Road Intersection Improvements

PROJECT PURPOSE AND NEED

The Will County Division of Transportation and Crete Township Road District are conducting a Phase I Preliminary Engineering and Environmental Study at the intersection of Exchange Street at Burville Road near Crete, Illinois.

The purpose of the project is to improve safety at the intersection of Exchange Street at Burville Road. 63 crashes occurred within a 6-year period with 15 crashes classified as type K, A, B, or C (KABC) injury crashes. Rear end crashes accounted for 1K, 3B, and 3C crashes while head on and sideswipe crashes accounted for 2A and 4B crashes. The improvements are necessary to reduce the potential for severe crashes that results from rear end, head on, and sideswipe crashes.

Alternatives have been analyzed based on their traffic operations, safety, environmental, right-of-way impacts, and cost. Public comment is being sought regarding the preferred alternative.



K – Fatality / A – Incapacitating Injury / B – Non-Incapacitating Injury / C – Possible Injury

PROJECT SCHEDULE

We are here

Phase I

Mid-2022 to Mid-2025
**Preliminary Engineering
& Environmental Studies**

Phase II

Mid-2025 to Late-2026
**Plan Preparation &
Land Acquisition**

Phase III

**Early-2027
to Late-2028**
Construction

We are here

1



Data
Collection

2



Identify
Issues
& Concerns

3



Develop
& Evaluate
Alternatives

4



Present
Alternatives &
Public Involvement

5



Identify & Refine
the Preferred
Alternative

6



Public
Involvement

7



Complete
Environmental &
Engineering Report

PUBLIC
INFORMATION
MEETING



Wednesday, April 30, 2025



4:00 PM to 7:00 PM



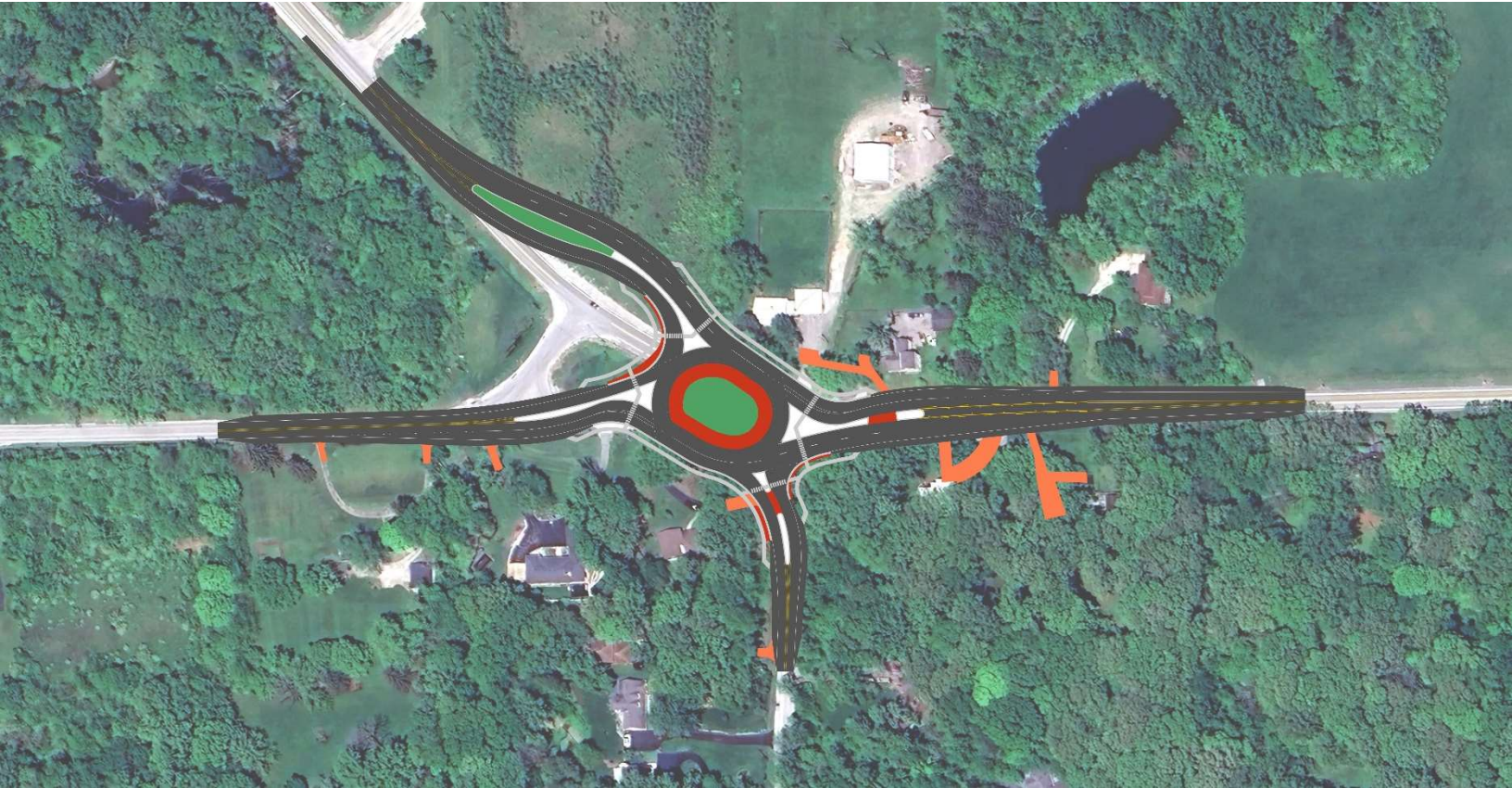
26730 S. Stoney
Island Avenue
Crete, IL 60417



Crete Township Road District

Exchange Street at Burville Road Intersection Improvements

PREFERRED ALTERNATIVE: ROUNDABOUT



NOTICE OF SECTION 4(f) IMPACT

The Will County Division of Transportation is seeking public comments on the effects that proposed improvements to the Burville Road at Exchange Street intersection will have on the Moeller Woods Preserve. The Moeller Woods Preserve, which is under the jurisdiction of the Forest Preserve District of Will County, is a significant, publicly owned forest preserve. As such, it is subject to protection under Section 4(f) of the U.S. Department of Transportation Act of 1966. For the Burville Road at Exchange Street intersection project, the Will County Division of Transportation intends to seek a Section 4(f) involvement impact finding from the Federal Highway Administration based on a determination that the project will not adversely affect the features, attributes, or activities that qualify the Moeller Woods Preserve for protection under Section 4(f).

Information on the Moeller Woods Preserve impacts is available at the link below, Will County DOT address below, and on display during this Public Information Meeting.



Public Information Meeting exhibits and an online comment form are also available at www.BurvilleAtExchangeStudy.com

Scan the QR code to view the project website

PUBLIC INPUT

Comments can be submitted online, in-person at the meeting, or to:



Attn: Christina Kupkowski, P.E.
Will County Division of Transportation
Planning & Programming Manager
16841 W. Laraway Road, Joliet, IL 60433



ckupkowski@willcounty.gov